



Kim Diaphragm Valves

focus: flow



DN 8



KDV DIAPHRAGMS
For Weir type diaphragm valves



Manufacture

KDV manufactures a wide variety of premium quality reinforced diaphragms to suit a range of industrial valves. Our strict quality control standards and the use of only the best materials and construction methods ensures complete security of line media in the harshest of environments. No matter what the application, KDV diaphragms can be relied on to provide peace of mind and superior return on investment. Our specialist reinforcement and bonding techniques ensure that our diaphragms provide outstanding durability and security

KDV PTFE faced diaphragms provide a corrosion resistant barrier in applications where rubber is not appropriate. Our PTFE and EPDM food grade diaphragms carry FDA approval - and our PTFE diaphragms satisfy USP class 6 (USA pharmaceutical standard).

Features & Benefits

Durable

High performance

Excellent compression qualities

Chemical and abrasion resistance

Superior leak tight sealing

Optional multi layer rubber, nylon and other specialty reinforcement materials

Range of custom diaphragm connector stud materials available



Styles

Elastomer Diaphragms DN8-DN20 "Button Style" - diaphragms are assembled by forcing the diaphragm button against the corresponding recess on the compressor.

DN25 + "Screwed Style" - diaphragms are assembled by screwing the diaphragm stud into the corresponding female thread on the compressor.

Standard PTFE Diaphragms - DN15-200 two piece diaphragms are assembled by rotating the bayonet connection on the diaphragm 90°

PTFE diaphragms including - One piece laminated diaphragms DN15-50 and DN250-300 with screwed connection, and two piece with screwed connection DN15-250.



"Screwed Style" diaphragm



"Bayonet Style" diaphragm



"Screwed Style" diaphragm - DN 150



"Button Style" diaphragm

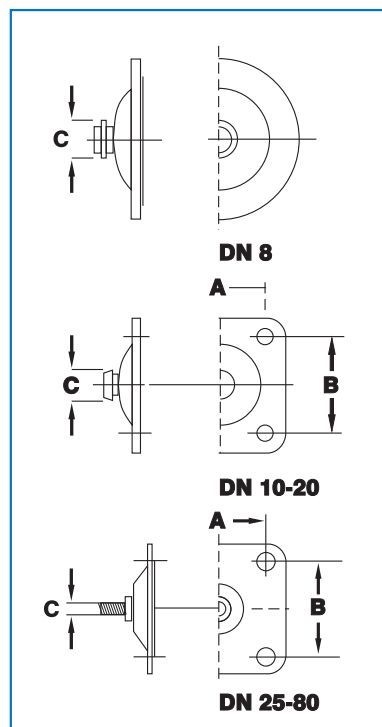
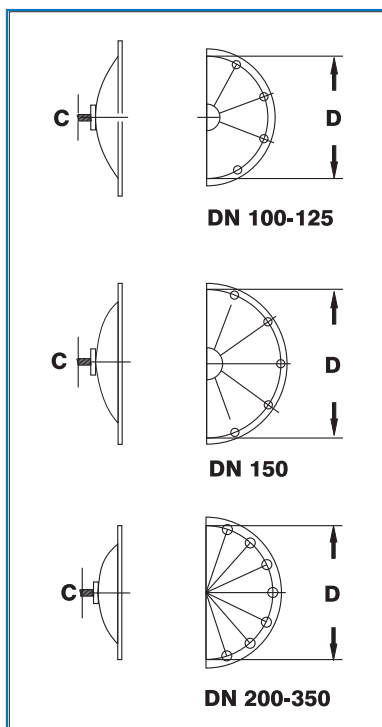
For detailed product information visit www.kdvflow.com

Grades & Services

GRADE	MATERIALS	TEMP		SIZE RANGE		TYPICAL SERVICES
		°C	°F	Imperial	Metric	
10	Natural Rubber NR	-40 - 100	-40 - 212	1/4" - 14"	8 - 350mm	General Purpose, abrasives, water, diluted minerals, acids
11	Natural Rubber Composite	-40 - 100	-40 - 212	1/4" - 8"	8 - 200mm	Abrasives, slurry and suspended solids
20	EPDM/Black Ethylene Propylene Rubber	-30 - 120	-22 - 248	1/4" - 14"	8 - 350mm	General Purpose, resistant to temperatures, most corrosive chemicals and abrasive liquids.
22	EPDM/food grade (FDA)	-30 - 120	-22 - 248	1/4" - 8"	8 - 200mm	Food and pharmaceuticals
30	Butyl Rubber IIR Chlorobutyl - Isobutylene Isoprene Halogenated	-30 - 130	-22 - 266	1/4" - 14"	8 - 350mm	Acids, alkalis, hot water, low pressure steam.
40	Nitrile Rubber NBR Acrylonitrile Butadiene Rubber	-15 - 100	5 - 212	1/4" - 14"	8 - 350mm	Oils, fats & fuels.
50	Neoprene CR Chloroprene Rubber	-20 - 105	-4 - 221	1/4" - 14"	8 - 350mm	Air, weak chemicals, greases.
60	Hypalon® CSM Chlorosulfonated Polyethylene	-15 - 100	5 - 212	1/2" - 14"	15 - 350mm	Concentrated acids & alkalis, chlorine services.
70	FKM/Viton® FPM Fluorinated Elastomer	-20 - 150	-4 - 302	1/2" - 8"	15 - 200mm	Concentrated sulphuric & other acids, aromatic hydrocarbons, chlorine services.
80	Silicone	-30 - 175	-22 - 347	1/2" - 8"	15 - 200mm	Moderate or oxidizing chemicals, concentrated sodium hydroxide. Recommended for food.
92	PTFE/EPDM Backed	-30 - 175	-22 - 347	1/2" - 12"	15 - 300mm	High Chemical and temperature resistance.
93	PTFE/Butyl Backed	-30 - 150	-22 - 300	1/2" - 8"	15 - 200mm	High Chemical and temperature resistance.
96	PTFE/Hypalon® Backed	-20 - 120	-4 - 248	1/2" - 8"	15 - 200mm	High Chemical and temperature resistance.
97	PTFE/FKM-Viton® Backed	-20 - 175	-4 - 347	1/2" - 8"	15 - 200mm	High Chemical and high temperature resistance.

Temperature range shown is a guide only. For specific services contact your local KDV distributor. Diaphragms manufactured for vacuum duties include special reinforcing. They are identified with a suffix "V" after the material code on the Tab e.g: 3V. All diaphragms intended for vacuum service must be specified.

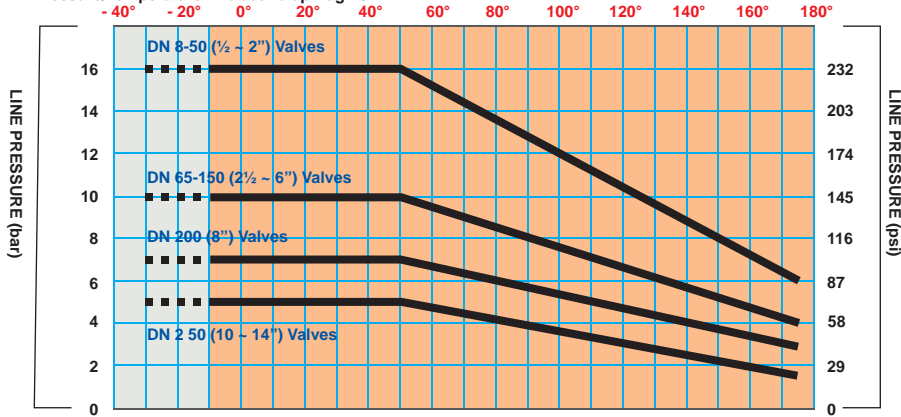
Dimensions



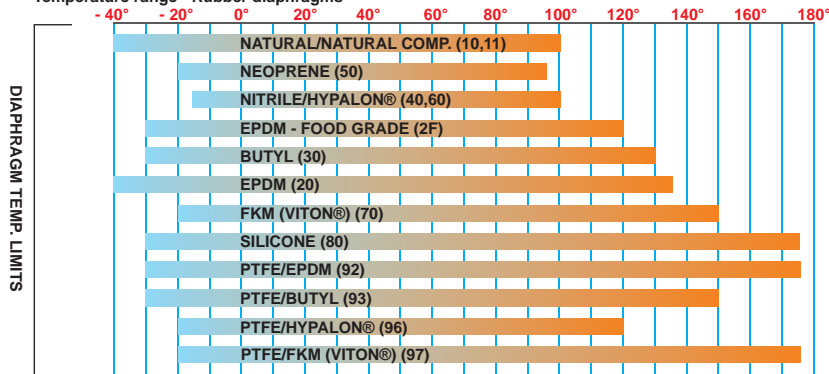
Nominal Size	A	B	C	D
8			9.5	28
10	33	37	13	
15	33	37	13	
20	40	44	13	
25	46	54		
32	60	67	1/4"W	
40	65	70		
50	78	83		
65	95	102		
80	114	127	5/16" W	
100				194
125			3/8"W	222
150				273
200				381
250			7/8"W	438
300				508
350				527

Pressure/Temperature

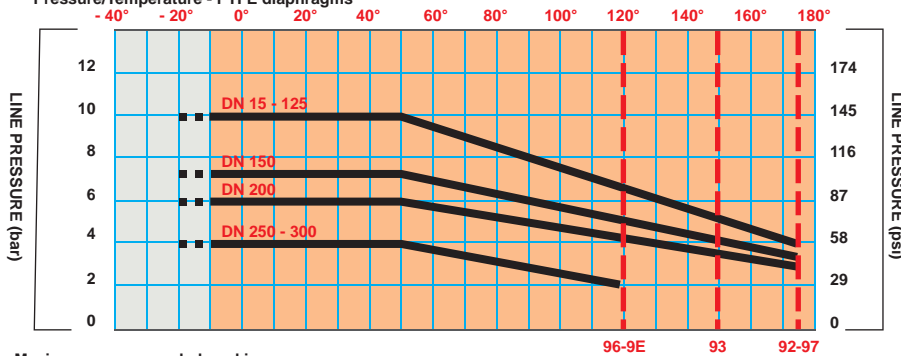
Pressure/Temperature - Rubber diaphragms



Temperature range - Rubber diaphragms

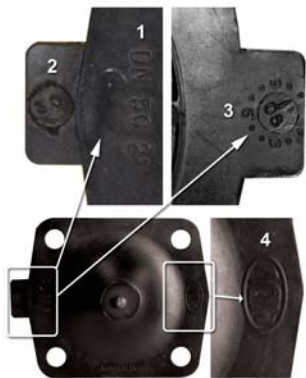


Pressure/Temperature - PTFE diaphragms



Maximum recommended working pressure

Diaphragm identification

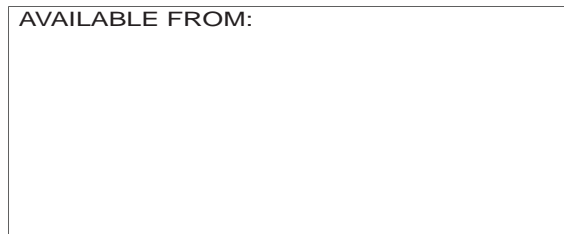


1. Size
2. Grade
3. Manufacturer code (underside)
4. Genuine KDV part stamp

Kim Diaphragm Valves Pty. Ltd.
Corporate Head Office
16-18 Overseas Drive, Noble Park VIC 3174
Australia

Tel: +61 3 8793 4000
Fax: +61 3 8793 4040
Email: info@kdvflow.com

AVAILABLE FROM:



The information contained in this brochure is for general guidance only. Kim Valves Australia Pty. Ltd. reserves the right to change specifications without notice. KDV, Kim Diaphragm Valves and logo are Trade Marks and Registered Trade Marks. © Copyright 2008, Kim Valves Australia Pty. Ltd.

KDV

A Passion for perfection

Established in Australia in 1979, KDV specialises in the manufacture and distribution of a wide range of industrial valves.

The company's core product group continues to be the range of Kim Diaphragm Valves, now marketed internationally under the KDV brand.

The expansion of the business over the years has seen exponential growth of the KDV product base, which now includes a wide range of both manually operated and automated diaphragm valves. These products incorporate features now demanded by instrumentation and mechanical engineers from a wide range of industries such as:

- Water treatment
- Mining and Mineral Processing
- Chemical and Fertiliser Production
- Oil and Petrochemical
- Food, Beverage and High Purity
- General Industry

